



Iron Mountain Mines, Inc. is pleased to announce a Spiritual and Humanitarian Project to build a 200 foot Tall Statute of Our Lord Jesus Christ on the Historical Iron Mountain in the Southeastern Klamath Mountain Range Northwest of Redding, California.

The Christ Statute will be the tallest in the World. The Statute will be built on Iron Mountain at the 3,500 Feet Elevation, and will be seen from many miles of surrounding areas. Also, a 60 Foot Cross with a small chapel will be built at the base of the Christ Statute. These Spiritual monuments will be Sacred, a Sanctuary and Mecca for World Travelers to see and worship for God's glory.

The funds for construction of the Christ Statute will be from private contributions. Construction will commence on this private mountain property owned by Ted Arman in the immediate future with friends who believe in our endeavors for our Lord.

The infrastructure of the Christ Statute will be reinforced concrete and stainless steel, and the outer covering of the Statute will be White Marble from Italy. It is planned that the engineering will have professional architectural design, construction management and 24 hour security. Guided Tours will be available for worship after completion of construction of the Statute.

The Christ Statute will shine at night as a Beacon to Show the Way! We are reminded of our Lord Jesus Christ as He suffered for all of us on the Cross. We ask for His Blessings, Grace and Favor as we build this statue on this Sacred Mountain. We will worship and give thanks for His wonderful light and we will always be humble and worship Him.

Our Daily Prayer, "O Lord, we pray for Wisdom, Protection and Guidance. May the Holy Spirit watch over us as we spread the Peace and His Divine Love throughout the World for Thine is the Kingdom, Power and Glory forever, Amen".

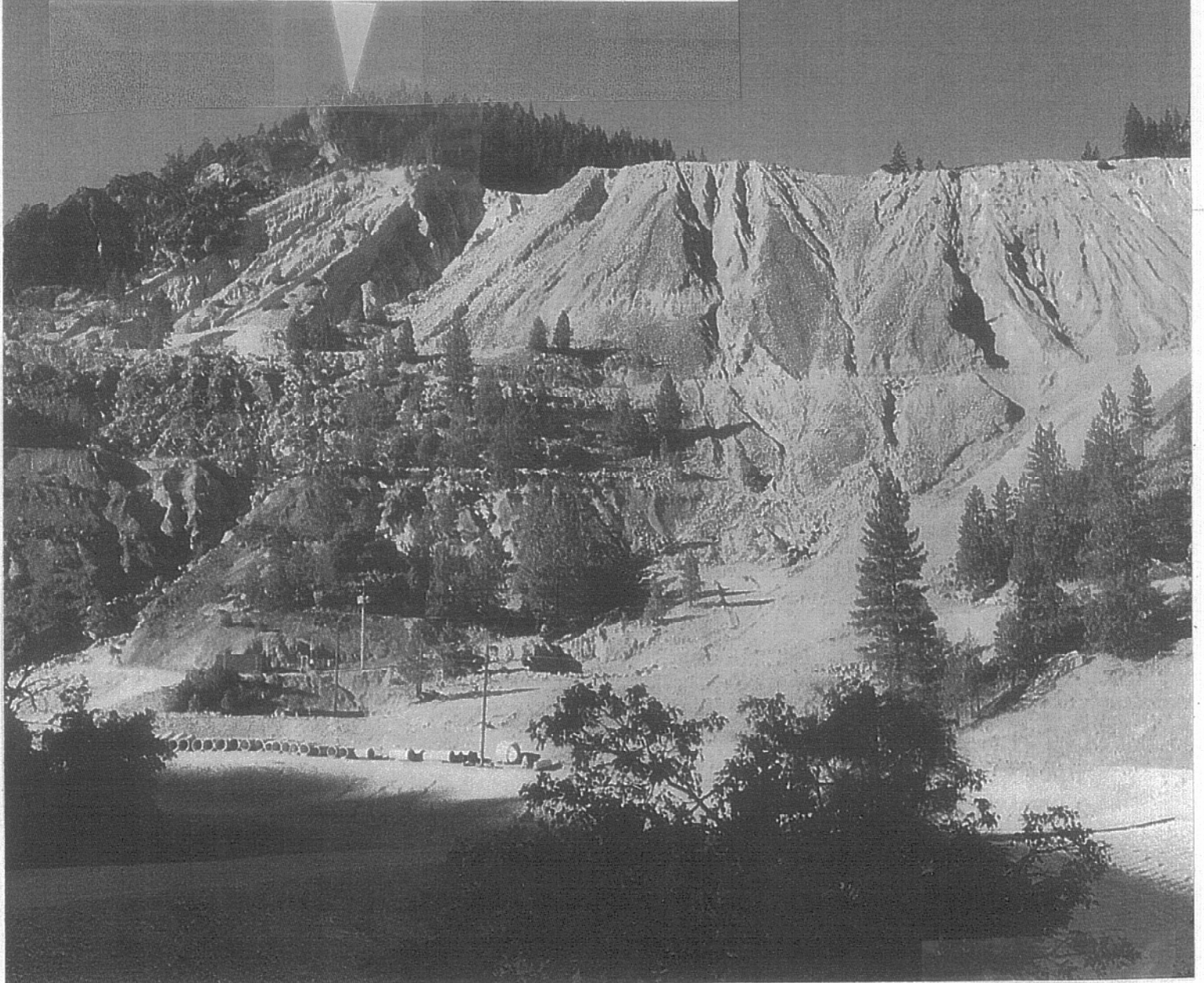


IMMI Developments

Iron Mountain Mines, Inc.

P.O. Box 992867, Redding CA 96099
Tel: (530) 275-4550 • Fax: (530) 275-4559

The location of the "CHRIST STATUE" 200 feet tall to be constructed.

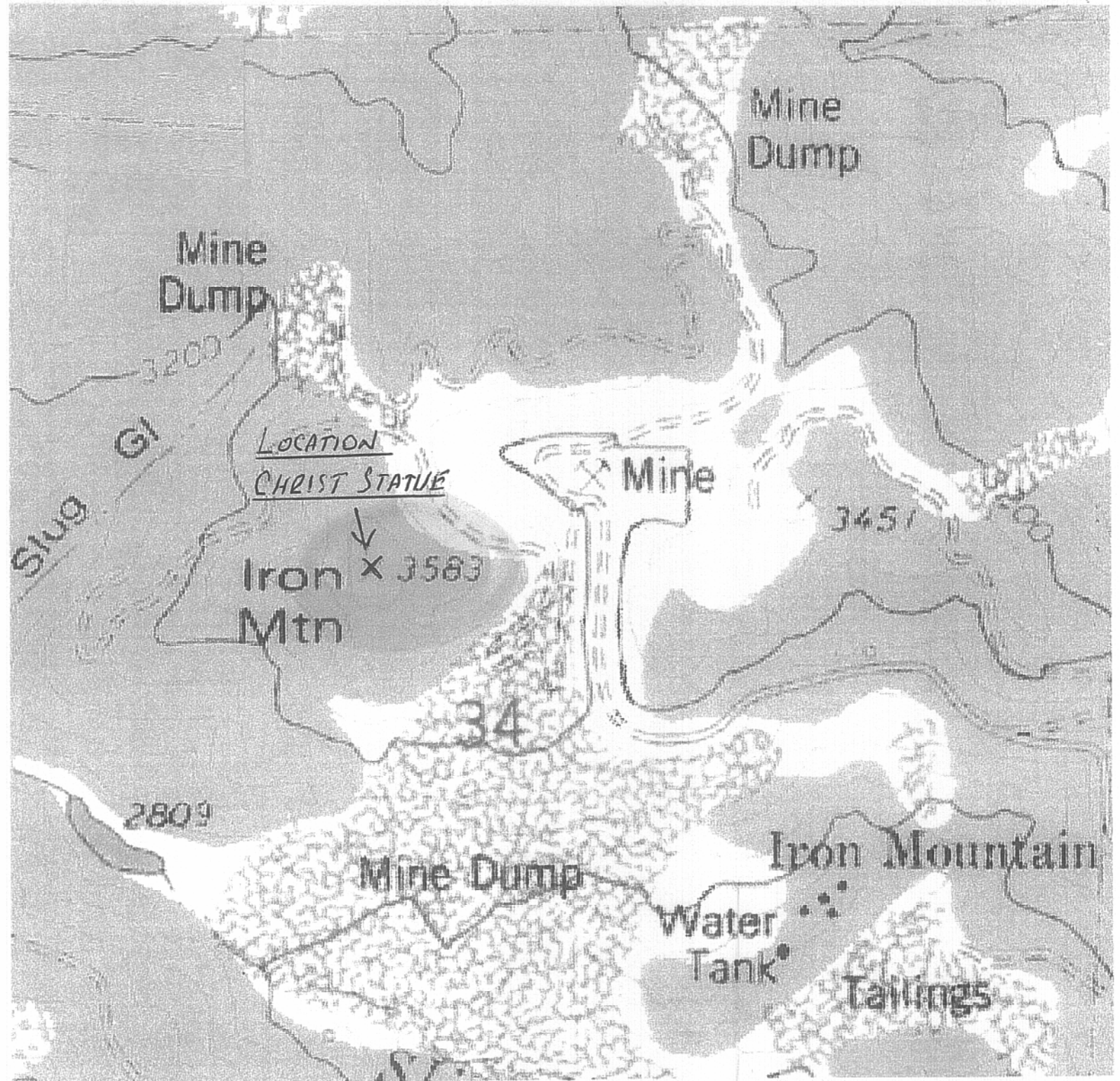




IMMI Developments

Iron Mountain Mines, Inc.

P.O. Box 992867, Redding CA 96099
Tel: (530) 275-4550 • Fax: (530) 275-4559





IMMI Developments

Iron Mountain Mines, Inc.

P.O. Box 992867, Redding CA 96099
Tel: (530) 275-4550 • Fax: (530) 275-4559

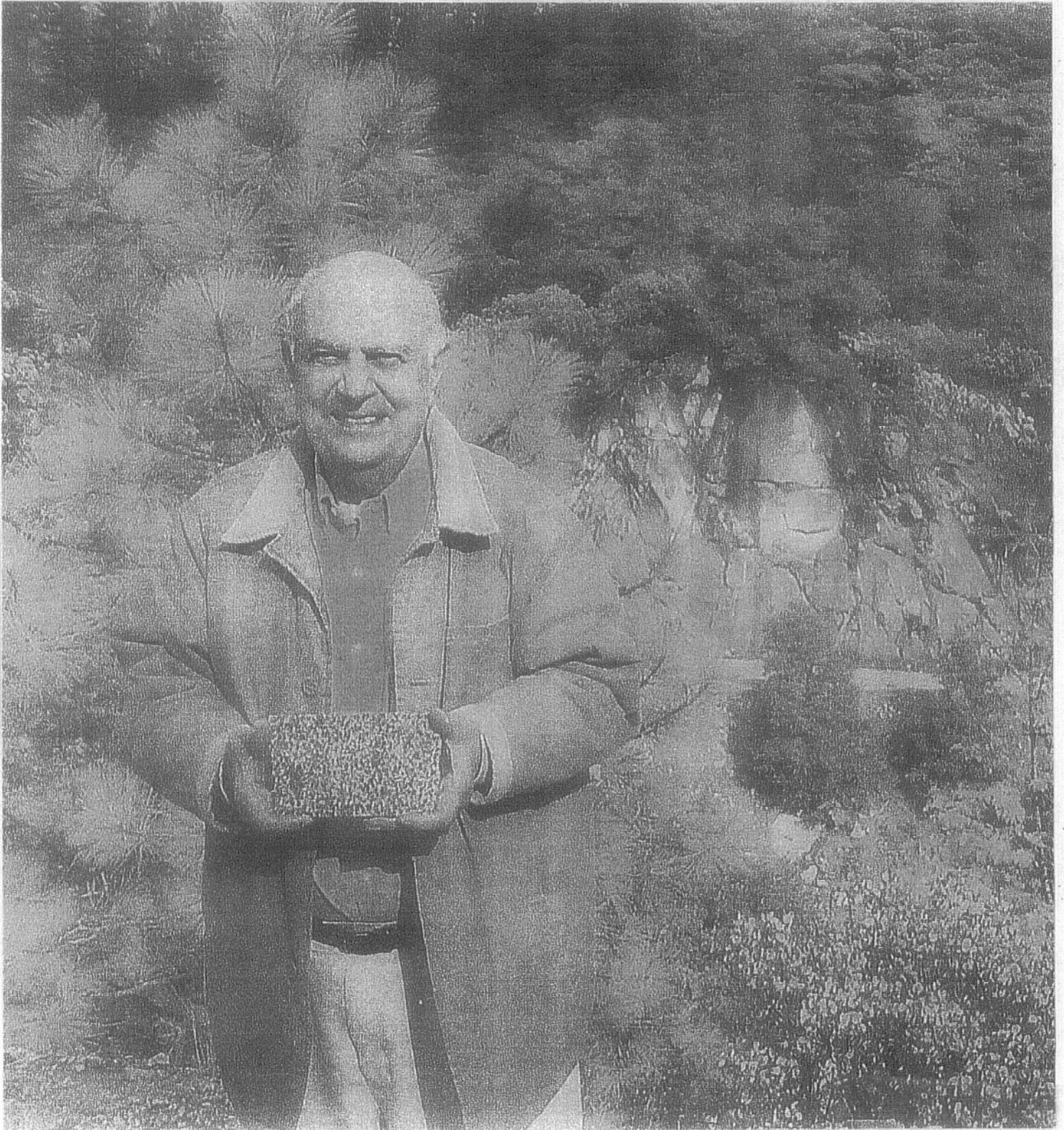




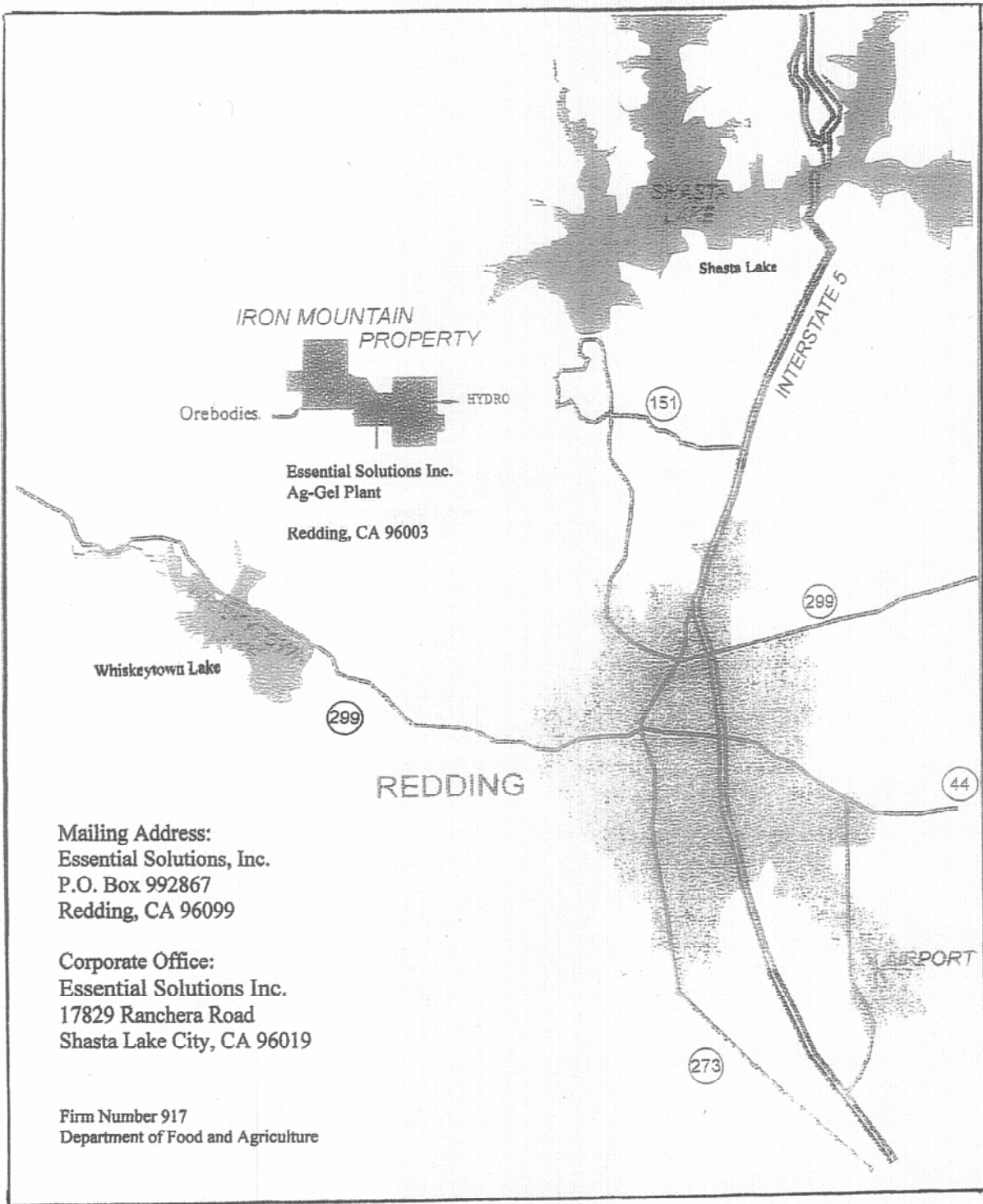
IMMI Developments

Iron Mountain Mines, Inc.

P.O. Box 992867, Redding CA 96099
Tel: (530) 275-4550 • Fax: (530) 275-4559



Mineral Exploration & Mine Development • Mining • Processing
Producers of Industrial and Agricultural Minerals



IMMI Developments

Iron Mountain Mines, Inc.

P.O. Box 992867, Redding CA 96099
Tel: (530) 275-4550 · Fax: (530) 275-4559

Essential Solutions Inc.

Website: www.ag-gel.com

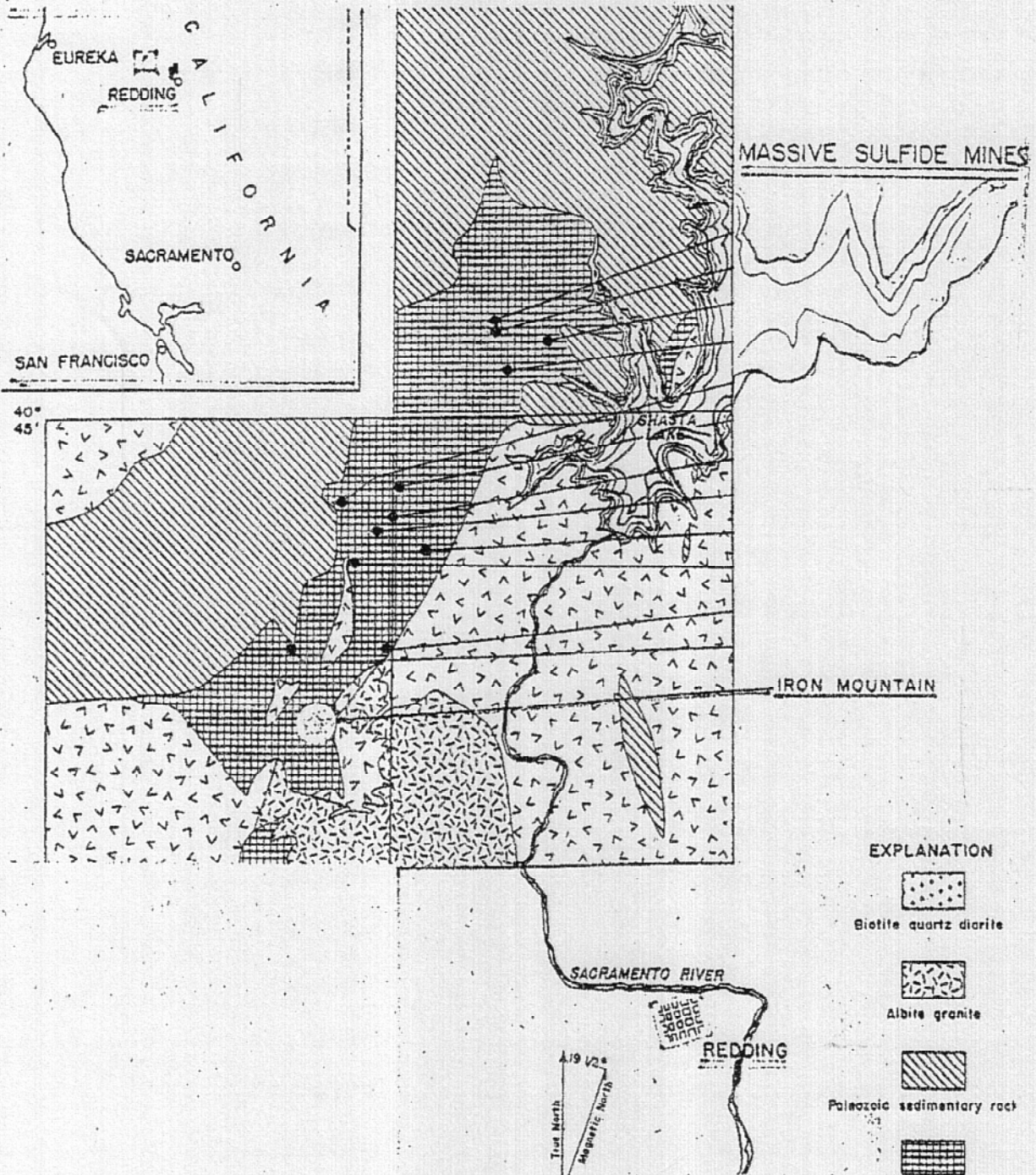
LOCATION MAP



Iron Mountain Mines, Inc.

P.O. Box 992867, Redding CA 96099
Tel: (530) 275-4550 • Fax: (530) 275-4559

IMMI Developments





IMMI Developments

Iron Mountain Mines, Inc.

P.O. Box 992867, Redding CA 96099
Tel: (530) 275-4550 · Fax: (530) 275-4559

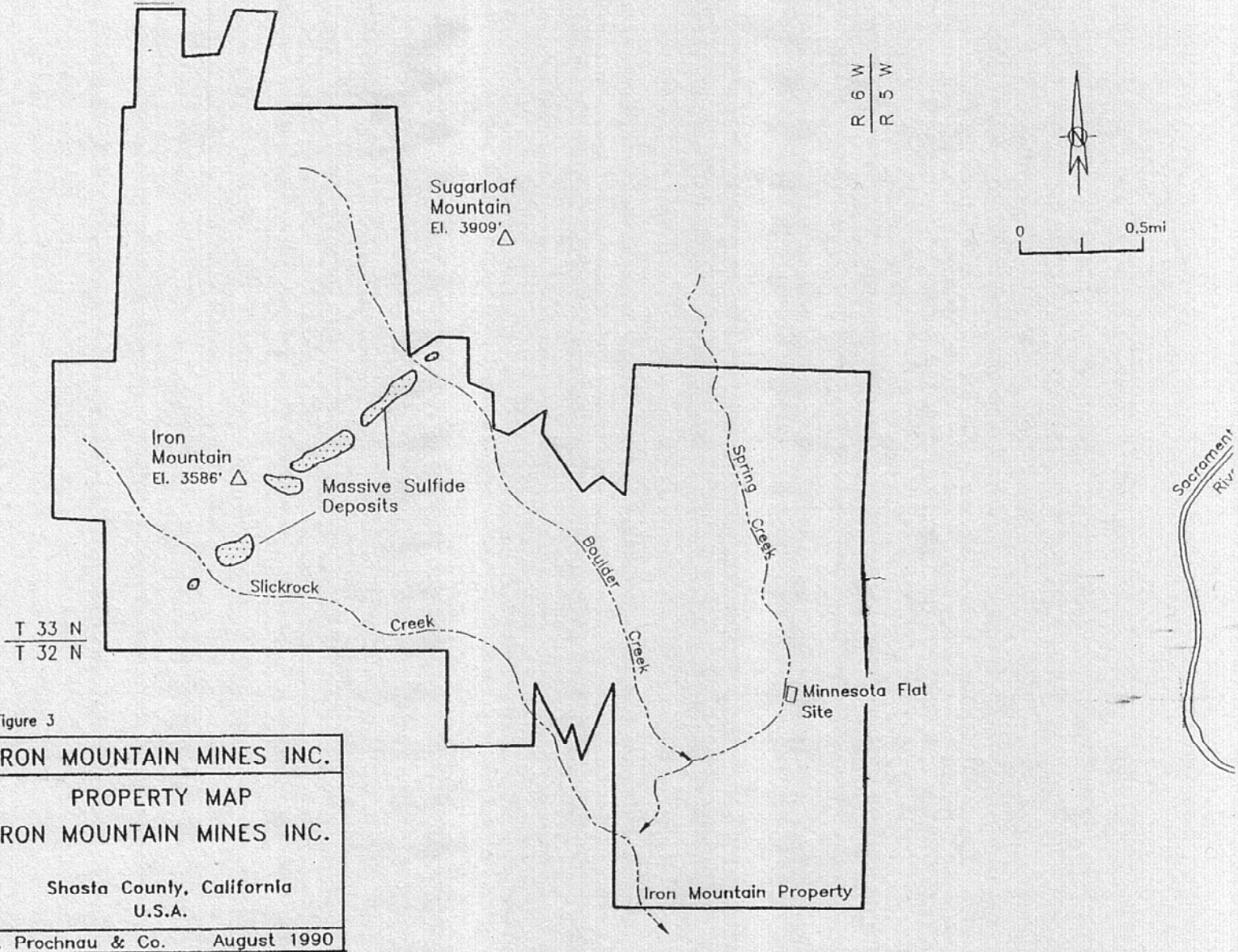


Figure 3

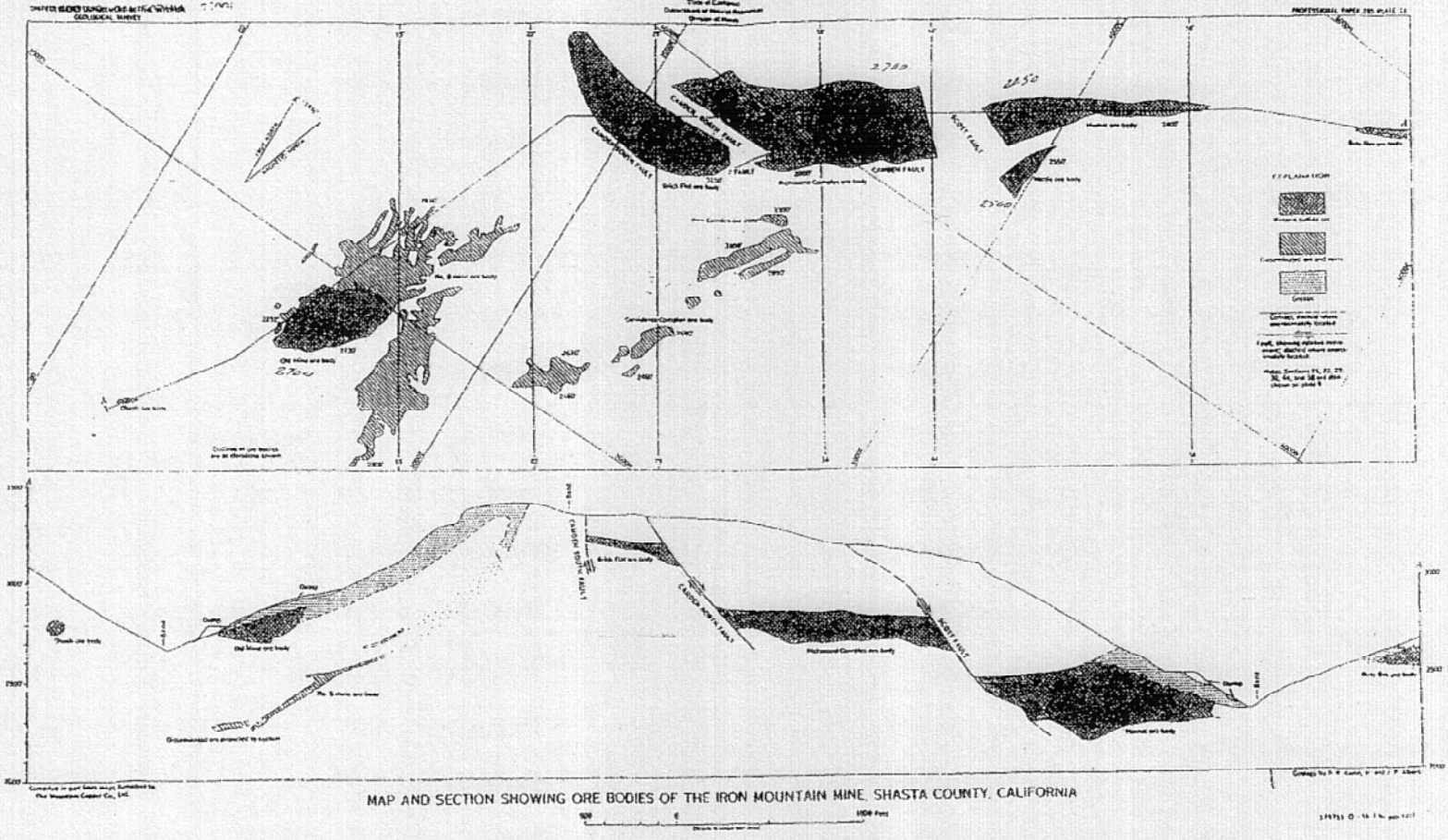
IRON MOUNTAIN MINES INC.
PROPERTY MAP
IRON MOUNTAIN MINES INC.
Shasta County, California
U.S.A.
J. Prochnau & Co. August 1990



IMMI Developments

Iron Mountain Mines, Inc.

P.O. Box 992867, Redding CA 96099
Tel: (530) 275-4550 • Fax: (530) 275-4559





IMMI Developments

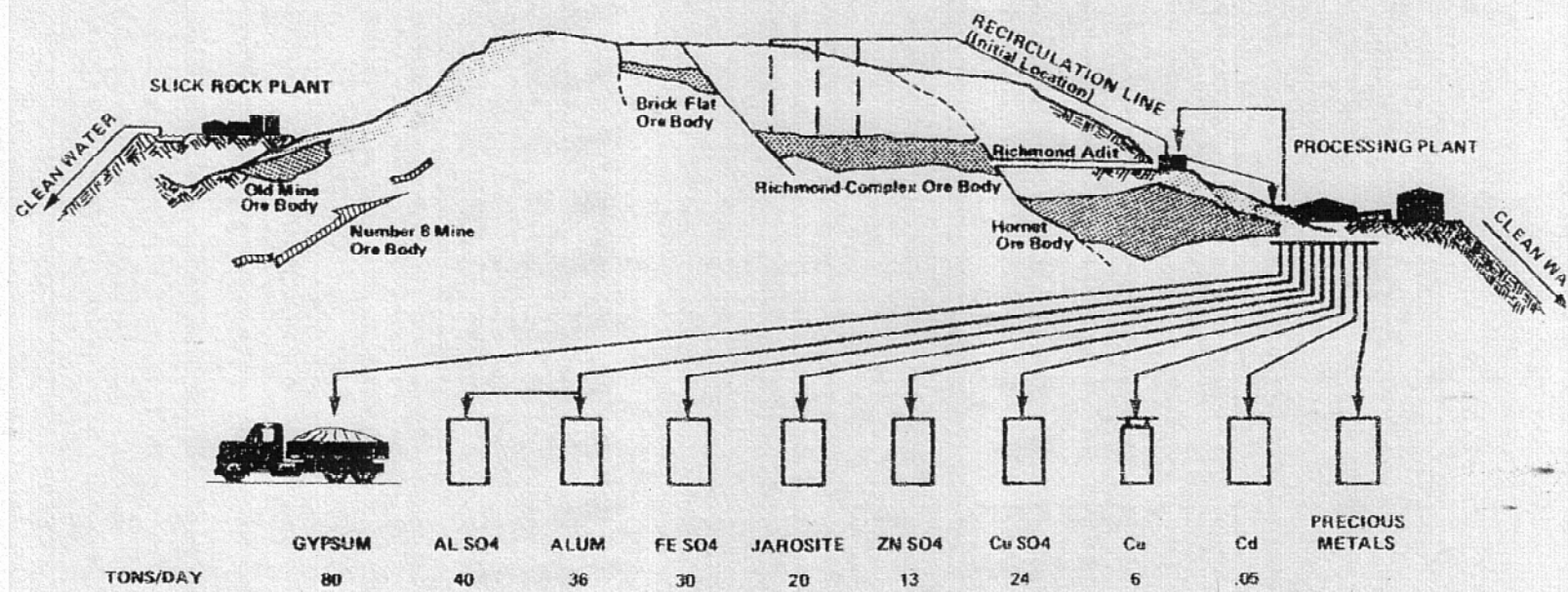
Iron Mountain Mines, Inc.

P.O. Box 992867, Redding CA 96099
 Tel: (530) 275-4550 · Fax: (530) 275-4559

FIGURE X-1

IRON MOUNTAIN MINES PROJECT

DAILY PRODUCTION AND SALES





Essential Solutions, Inc.

Advanced Technology for the Challenging World of Agriculture

REPRESENTING AG-GEL FOR THE FOLLOWING COUNTRIES:

- UNITED STATES
- CANADA
- MEXICO
- UNITED KINGDOM
- FRANCE
- GERMANY
- ITALY
- SPAIN
- SAUDI ARABIA
- SOUTH AFRICA
- INDIA
- CHINA
- THAILAND
- RUSSIA
- AUSTRALIA
- NORWAY
- SWEDEN
- IRELAND
- TURKEY
- GREECE
- BRAZIL
- ARGENTINA
- CHILE
- PERU
- VENEZUELA
- NEW ZEALAND
- BOLIVIA
- PHILIPPINES
- INDONESIA
- KOREA
- NORTH AFRICA
- PAKISTAN
- EGYPT
- ISRAEL
- PALESTINE
- JORDAN
- SYRIA
- IRAN
- BELGIUM
- SCOTLAND
- SWITZERLAND
- POLAND
- IVORY COAST
- NIGERIA
- PORTUGAL

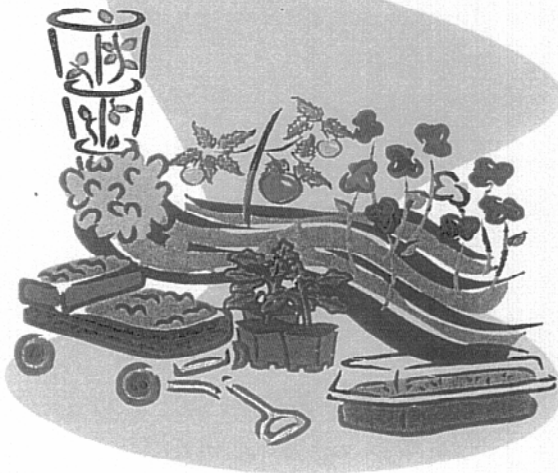
Natures

Ag-Gel™

Less Water - More Yield

Micronutrient Chelated Plant Food

ALL PURPOSE LIQUID PLANT FOOD FOR AMAZING PLANT GROWTH WITH SODIUM SILICATE SiO_2/Na_2O



NATURES AG-GEL SOIL AMENDMENT PLANT FOOD NATURAL CHELATED TRACE MINERALS GUARANTEED ANALYSIS

Available Phosphate (P205).....	0.0028%
Copper (Cu)	0.0078%
Calcium (Ca).....	0.1%
Boron (B).....	0.0048 %
Magnesium (Mg)	0.2%
Manganese (Mn).....	0.0072%
Iron (Fe)	1.1%
Zinc (Zn).....	0.36%
Sulfur (S).....	2.3%
Cobalt (Co).....	0.0001%

Derived from sulfide mineral deposits.

This natural product is for Farms and Home Gardens and is safe for the environment.

KEEP AWAY FROM CHILDREN AND PETS. AVOID EYE CONTACT. FLUSH WITH WATER. NOT FOR HUMANS OR ANIMALS.

INSTRUCTIONS: Shake well before using, dilute with water. Mix 2 oz per gallon of water. **Vegetables Perennials, Annuals, Flowers** - Use one gallon of solution for 10 sq ft of planting bed every 4 to 6 weeks. **Lawns, and Turf Grass** - Use 1 gallon of solution for 10 sq. ft every 8 weeks. **Newly Seeded Lawns** - feed every 4 weeks until lawn is established. **Vines and Shrubs** - Soak soil around plant every 4 weeks. **Trees** - Soak soil around tree once each spring, summer, and fall. **Indoor plants** - Soak soil around plant every 1 to 2 months.

Net Weight Per Gallon..... 4.23 Liters

MANUFACTURED BY:
Essential Solutions, Inc.

Made in the U.S.A.

www.ag-gel.com



Essential Solutions, Inc.

Advanced Technology for the Challenging World of Agriculture

REPRESENTING AG-GEL
FOR THE FOLLOWING
COUNTRIES:

UNITED STATES
CANADA
MEXICO
UNITED KINGDOM
FRANCE
GERMANY
ITALY
SPAIN
SAUDI ARABIA
SOUTH AFRICA
INDIA
CHINA
THAILAND
RUSSIA
AUSTRALIA
NORWAY
SWEDEN
IRELAND
TURKEY
GREECE
BRAZIL
ARGENTINA
CHILE
PERU
VENEZUELA
NEW ZEALAND
BOLIVIA
PHILIPPINES
INDONESIA
KOREA
NORTH AFRICA
PAKISTAN
EGYPT
ISRAEL
PALESTINE
JORDAN
SIRIA
IRAN
BELGIUM
SCOTLAND
SWITZERLAND
POLAND
IVORY COAST
NIGERIA
PORTUGAL

Executive Summary

Essential Solutions, Inc. (the "Company") is a fertilizer manufacturing company that has developed a new agriculture fertilizer and water-conserving product. This product has multiple marketing segments within the multi-billion-dollar agriculture fertilizer industry. *The Company believes that its' product AG-GEL is uniquely positioned to successfully penetrate these market segments based upon product test results and marketing feedback.* The Companies product addresses a worldwide problem of micronutrient depleted soil and the ever-increasing shortage and expense of water for agriculture use.

Essential solutions, Inc. (ESI) was formed in November 1998 for the purpose of manufacturing and marketing the new agriculture product *AG-GEL*. The manufacturing process and exclusive formulation of this product, that can not be duplicated, is unique because of the special chemistry of the mineral resources at this site. This exclusive process uses highly concentrated mine water that is naturally chelated that flows from private mines owned by Iron Mountain Mines, Inc. in Shasta County, California. The natural mine water flows are from 70 to 100 million gallons annually. The U. S. Government scientist estimate that these flows have 2500 years of mineral life.

The co-founders of ESI are Phillip Stephenson, former president and Ted W. Arman, Chairman and CEO and current president and owner of Iron Mountain Mines. ESI has a twenty year lease for the mine water to produce *AG-GEL*. The Company has spent over 3 ½ years of research and development on the process for manufacturing this unique product. *AG-GEL* improves plant growth, conserves water in the soil, replenishes low or depleted micronutrients, a worldwide agricultural problem, and reduces the amount of water lost from evaporation. *AG-GEL* will hold a strong position in the global agricultural marketplace by economically replenishing essential nutrients that grow healthier food.

AG-GEL is a semi-permeable gel membrane that provides zinc, copper, manganese, boron, sulfur, calcium, magnesium and iron nutrients for plant uptake. It reduces the rate water evaporates from soil, lowering the amount of water required for crop production. Tests have shown that *AG-GEL* saves up to 50% more water over untreated soil. By absorbing over 700% its dry weight in water, and supplying essential plant nutrients, *AG-GEL* is a gel sponge with fertilizer that replenishes nutrient depleted soils while reducing water evaporation. **There is no other mineral resource product on the market like *AG-GEL*.**

The Company is now establishing customers and international dealers/distributors to place large purchase contracts within the next twelve months. The projected worldwide revenues from sales are expected to be in the millions annually.

Expanding sales will continue as world markets are established.

The basic components of this plan are:

1. Competitive pricing
2. Expand the markets
3. Increased advertising
4. Lower our unit costs,
5. Thereby achieving higher profits.

The Company is seeking investments from private individuals and/or companies. A total of \$5,000,000 is being raised in the current offering, which will be used to finance working capital, plant expansion equipment and marketing. The company will issue common stock to investors. To date, the company has invested internally hundreds of thousands of dollars on R&D, product development, process equipment, mineral lease, and plant facilities located on private property. **NOTHING HEREIN SHALL CONSTITUTE AN OFFERING FOR SALE OF SECURITIES.**

Updated June 1, 2002